

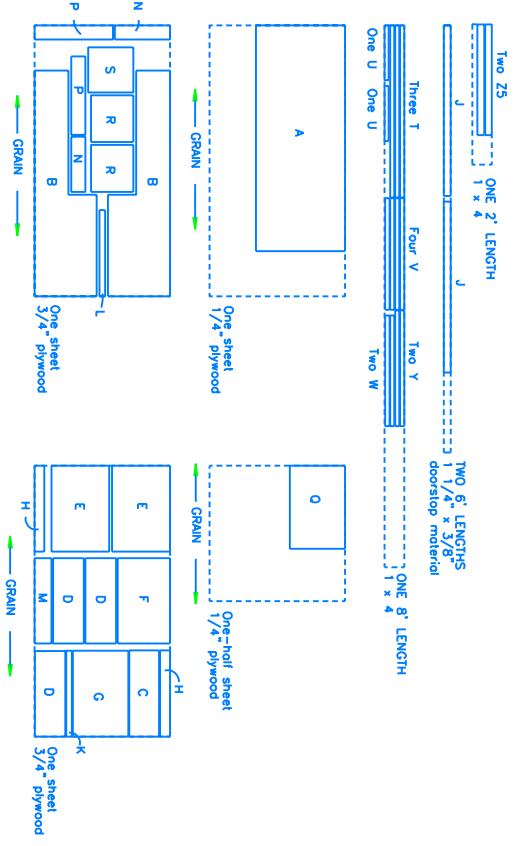
NOTICE
 The purchaser agrees when purchasing this plan (the "Plan") that the purchaser is responsible for the right to build or construct the object or project set out in the Plan (the "Project") for his/her/its personal use only and not for any commercial purpose. Any construction of the Plan in whole or in part by any means whatsoever is strictly prohibited.
 3) Blueprints For The Handyman should not be liable for any injury, loss or damage resulting therefrom.

NOTE: Read all directions before beginning
 Carpenter's glue should be used to reinforce all joints
 Set all nails, countersink all screws
 Dimensions in brackets denote millimeters

Directions

1) Lay out your material on the workbench, or on sawhorses, as outlined in the suggested material layout (Fig. 2). Chop out all ports exactly as indicated in the plan, including the dovetail joints. Ensure to leave a small space between cut lines to allow for the width of the saw. Before cutting, double check all measurements to ensure they are correct. We suggest that you tape along the edges of cutlines with masking tape to avoid splintering when cutting across the grain. Always cut on the waste side of the line. Wipe off any excess glue at each stage of the project. For cutting the rabbit in pieces B and X, you can use a table saw set to a depth of 1/2" and 3/8". The rabbets on pieces N are 3/8" deep by 3/4" wide. Test the depth of your blade on a scrap piece of wood before making the actual cut. For the doors in pieces M and P, measure up from the bottom of each cut. Set the depth to 1/4" and cut across each. Piece X must be cut to a depth of 1/4" and cut across each. Piece B is on the inside 80° edge.

OVER



MATERIALS LAYOUT
 FIGURE 1

DELUXE TELEVISION STAND – Project #304

MATERIALS LIST

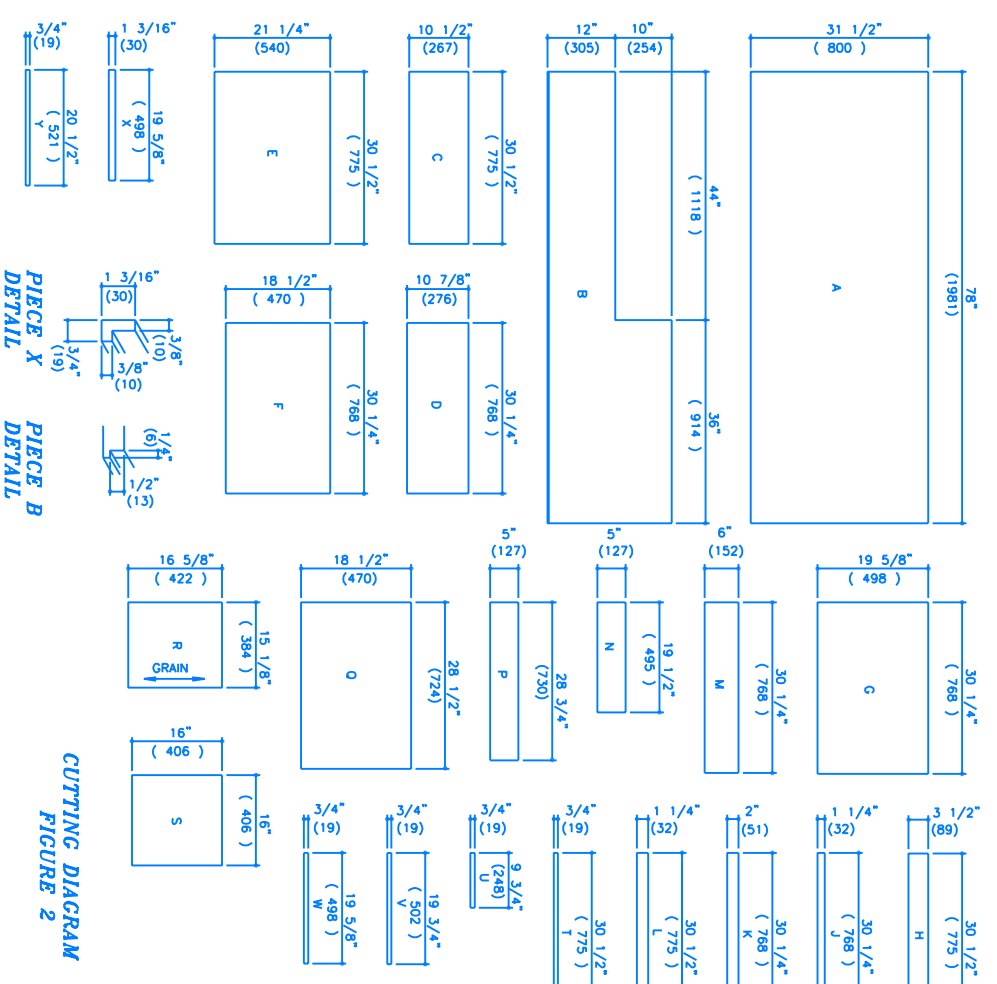
- One 4"x8" sheet 1/4" plywood, good both sides
- Two 4"x8" sheets 3/4" plywood, good both sides
- One 24"x48" sheet 1/4" plywood, good both sides
- Two 6" doorstops (1 1/4"x3/8")
- One 8" 1x4 (3/4"x3 1/2")
- One 2" 1x4 (3/4"x3 1/2") Maple or Birch
- 24 edgetape

MATERIALS LIST

- Sixteen shelf supports brackets
- Approx. 1 lb. 1 1/4" finishing nails
- Approx. 1/2 lb. 3/4" finishing nails
- Approx. fifty 1 1/4" #8 flushhead screws
- Two 16"x3/4" piano hinges & hardware
- Two magnetic door latches & hardware
- Two 18" side mounted drawer guides (1/2") & hardware

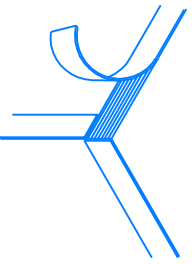
MATERIALS LIST

- Four drawer pulls & hardware
- Stain & varnish, or oil
- Sandpaper
- One lazy suson 6"x6" swivel

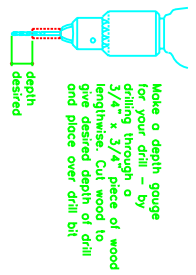


CUTTING DIAGRAM
 FIGURE 2

EDGE TAPE
 ILLUSTRATION 2



DRILL DEPTH GAUGE
 ILLUSTRATION 1



Note a depth gauge for your drill. By drilling through a 3/4" x 3/4" piece of wood lengthwise. Cut wood to give desired depth of drill and place over drill bit desired depth.